



2025 B.A.S.S. Nation Qualifier

*Lake Erie
Monroe, MI
July 16-18, 2025*

Takeoffs: 6:30 am Weigh-ins: 2:30 pm

Official Host

*Explore Monroe Michigan
Monroe, MI*

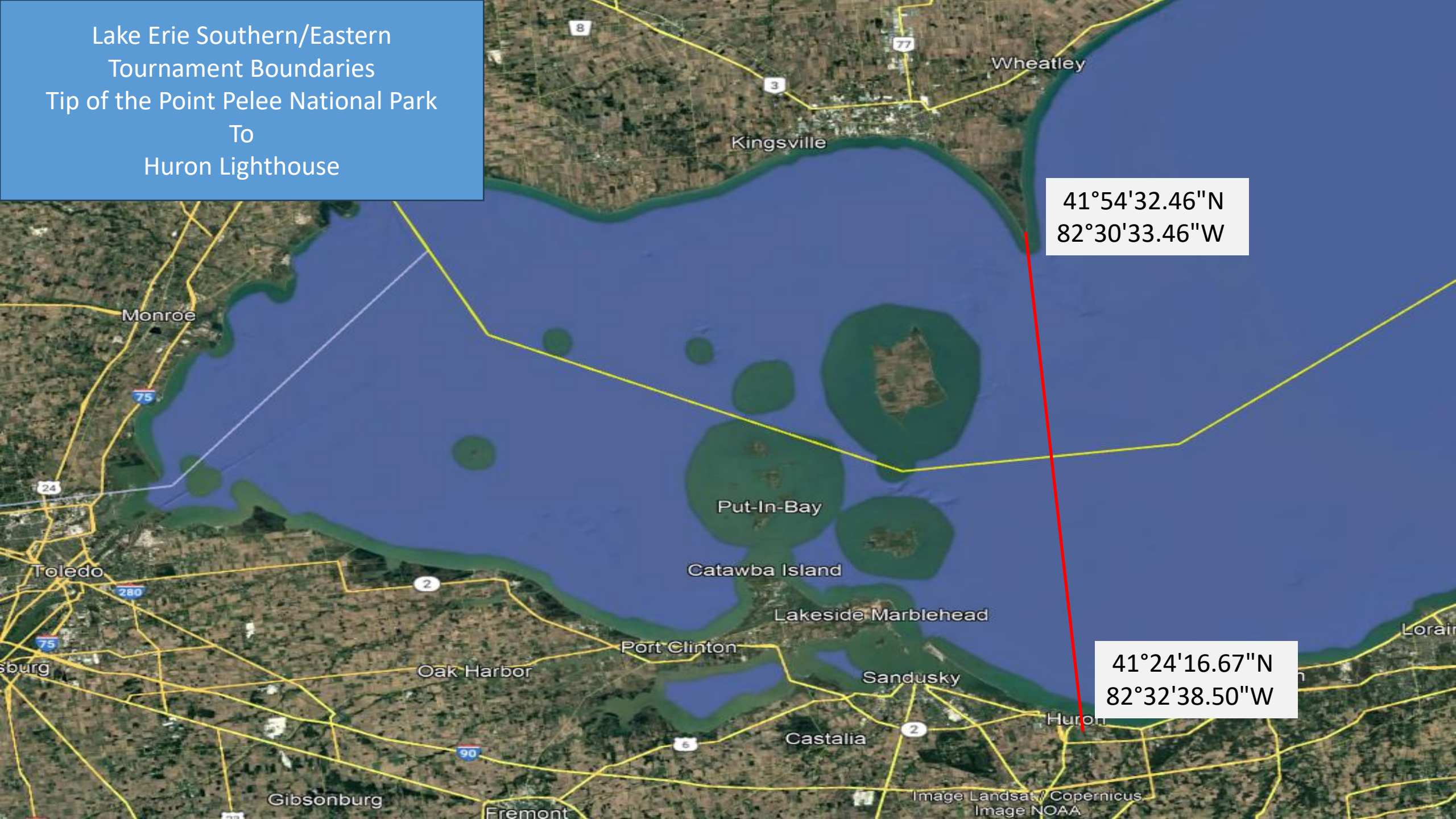


Tournament Information

TD Contact: GL Compton 864-872-0028

Pre-Tournament Off-Limits	Off-limits will begin on Wednesday, July 2 nd and extend until July 12 th at safe light. Please review rules on no-information.
Official Practice Days	July 12 th to July 15 th All competitors must be off tournament waters at 12:00 noon local time on Tuesday, July 15 th
Official Tournament Check-in	July 15 th from 2:00 pm to 4:00 pm via time slots. <u>Check-In Reminder</u> : All anglers must check-in in person with B.A.S.S. staff onsite. This will be the only check-in period. <i>See Rule No. 4</i> You will be fined for being late.
Check-in Location	River Raisin National Battlefield Event Center 333 N. Dixie Hwy Monroe, MI 48162
Tournament Briefing	Virtual – All contestants must view.
Tournament Waters	Tournament waters will be Lake Erie and any canals and creeks connecting to Lake Erie. Only water open to all public fishing will be considered tournament waters. Any water closed to public fishing will be closed to this tournament's contestants. Including Lake St. Clair – See Boundary Map Below Including Western Lake Erie – See Boundary Map Below
Official Launch	Sterling State Park 2800 State Park Rd, Monroe, MI 48162
Fishing Limits	5 fish boaters, 3 fish nonboater – 14 inch min length
Fishing License Requirements	Michigan License required - https://www.mdnr-elastic.com/Welcome/Default.aspx . If fishing Ontario waters you must purchase an Outdoors Card and an Ontario Sport Fishing License NOT a conservation license – https://www.ontario.ca/page/fishing If fishing Ohio waters, you must have Ohio License https://ohiodnr.gov/buy-and-apply/hunting-fishing-boating/fishing-resources/fishing-licenses If fishing or traversing through the Walpole Island Territory, you must have a pleasure craft permit and fishing permit. https://www.walpoleislandfirstnation.ca/hunting-and-fishing

Lake Erie Southern/Eastern
Tournament Boundaries
Tip of the Point Pelee National Park
To
Huron Lighthouse



41°54'32.46"N
82°30'33.46"W

41°24'16.67"N
82°32'38.50"W

Lake St. Clair Northern Boundary
Interstate 69 bridge (Blue Water Bridge)



42°59'55.71"N
82°25'30.67"W

42°59'53.53"N
82°25'19.25"W